

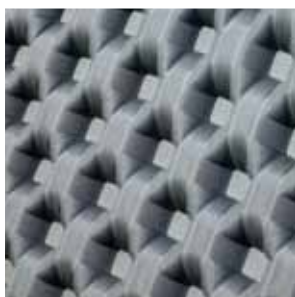


ACEFormer™

PRODUCT

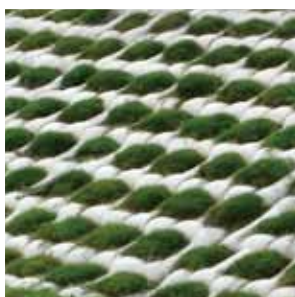
ACEFormer™ is the registered trademark of ACE Geosynthetics for all its geotextile mattress products. It is generally a soft and flexible formwork or mattress formed by two layers of high strength PP and/or PET woven geotextile. The geotextile is able to accommodate different landforms, and provide a formwork to construct a surface protection structure. With cement mortar as the filling material, the ACEFormer™ system provides an effective shield and medium to against erosion, and to reduce the wave energy and flow velocity on the applied surface.

There are six basic types of ACEFormer™. Each has its designed functionalities for different conditions and applications:



Filter Point Type

Provides filter points to reduce extra water pressure beneath the geotextile formwork, in order to improve structural stability for surface protection.



Vegetation Type

Provides surface protection to against erosion and at the same time enables vegetation growth in the system for a better appearance.



Pipe Type

Provides strip filters and space to form long tubular structure with cement mortar; remarkable performance in reducing the water pressure caused by wave.



L-Type

Provides a 2500 cm² coverage of bank protection units; each unit remains functional even if the connections among them are damaged by extreme external force; connections can be reinforced by steel bar or cable.



T-Type

Provides a 5000 cm² coverage of bank protection units (larger than the L-Type) for application in special or extreme conditions; the overall stability can further be enhanced by reinforcement whenever necessary.



Uniform Section Type

Provides a continuous protective layer with uniform thickness in the range of 20 to 50 cm; can prevent leaching and cause less hydraulic resistance than other types.



APPLICATION

ACEFormer™ can be applied to the following for erosion control and surface protection:

1. Coastal Protection.
Dyke Armor Layer.
Breakwater Armor Layer.
Submarine pipeline protection.
2. River and Channel Protection.
River Bed/Canal Lining.
Riverbank Surface.
Pier/Abutment protection.
3. Slope Protection.
Side slope.
Collapsed slope.
Embankment slope.

Real Case



ACEFormer™ is applied in a channel broadening project as bank protection at both sides of the channel. The main purpose is to prevent the channel from erosion. The application of ACEFormer™ not only reduces the flow velocity of water, but also enables vegetation growth along the channel for a more pleasant appearance than cement finishing. The easy and rapid installation of ACEFormer™ helps the project to complete within schedule with high effectiveness.

WHY ACEFormer™

Key Benefits:

- Easy installation.
- Applicable in various landform.
- Non removal of formwork.
- Cost-effective.
- Low environmental impact.

Key Features:

- Light weight and flexible formwork.
- High strength and durable material.
- Stable structural system.



www.geoace.com
sales@geoace.com